

LITHUANIAN CUP 2024

19-20 October 2024

Information Bulletin No. 1

September 10, 2024

Orienteering club OK Ažuolas, in partnership with the Lithuanian Orienteering Federation, would like to invite everyone to a orienteering competition to the 2-day orienteering competition Lithuanian Cup 2024 in Šventininkai, Vilnius district municipality

Organiser

Lithuanian Orienteering
Federation

Competition director - Vidmantas
Nakvosas

Chief referee – Gytis Nakvosas

Secretary – Gvidas Rūkas

National controller – Algimantas
Dambrauskas

Course planners FootO –
Adomas Časas, Tatuvydas
Rimkus

Arranging club

Orienteering club OK Ažuolas

Course planner MTBO –
Remigijus Masilionis

Mapper FootO – Egidijus
Kukenys

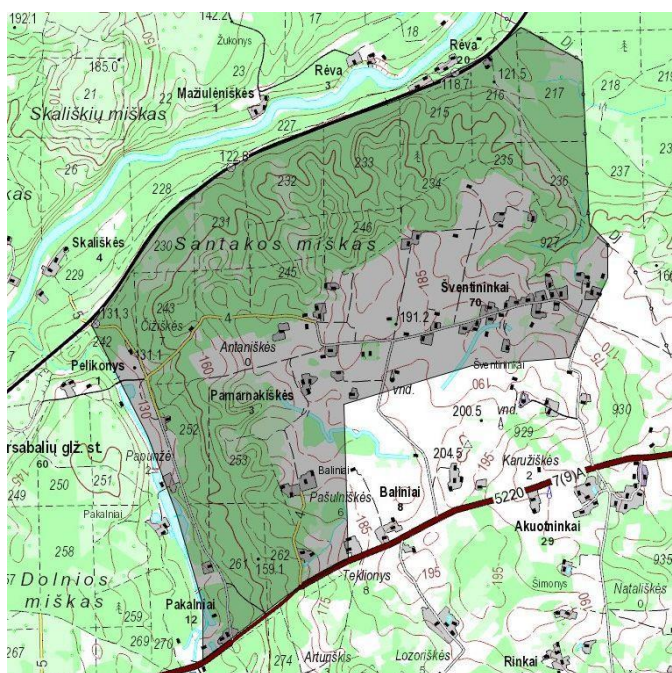
Mapper MTBO – Audrius
Smilgius, Remigijus Masilionis

Competitions are conducted in accordance with the rules of orienteering competitions approved by the Lithuanian Orienteering Federation and the requirements for organizers competitions.



Location

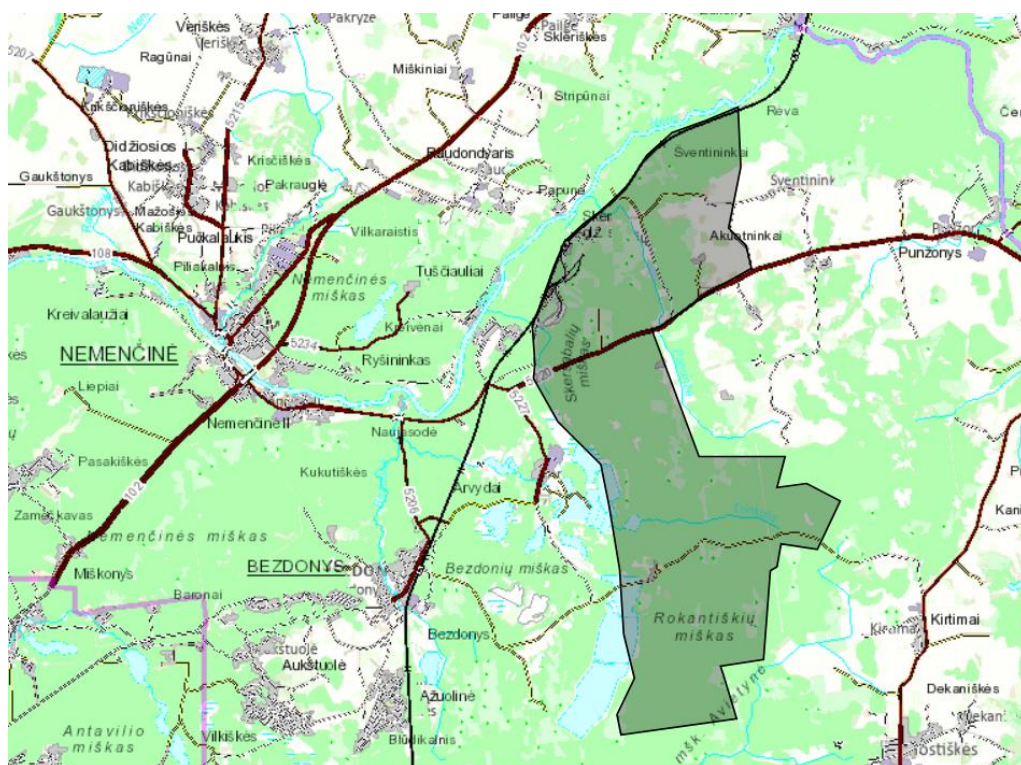
Competition will be held in Santaka forest, up to 30 kilometers towards north-east from Vilnius. The nearest settlement is Šventininkai village, nearest market town – Nemenčinė. The railway line Naujoji Vilnia – Turmantas cuts the forest away from Neris river.



Competition center –
Pamarnakiškės settlement
Coordinates 54.8675, 25.6089.
Link to a map: maps.lt; [Google Maps](https://www.google.com/maps)

Foot O competition area (top)

MTBO competition area
(bottom)





Preliminary programme

19 October

10:00 – 12:30 Arrival and registration at the competition center

12:00 MTBO competition start

13:00 FootO competition start

20 October

10:00 MTBO competition start

11:00 FootO competition start

12:30 MTBO prize-giving ceremony

14:30 FootO prize-giving ceremony and closing ceremony

Competition map and location

The area is located on the left bank (to the south west) of river Neris. The terrain is hilly, characterised by a river slope with deeply entrenched valleys and re-entrants as well as erosion gulleys. The terrain is reminiscent of other forested slopes along river Neris to the west of Vilnius. The area has few boulders and piles of stones. The slopes reach up to 40 meters, with a vertical elevation gain of 55 meters across the map.

The forest is predominantly of intermediate runnability, with sizeable areas of clear and fast, but also, dense areas offering poorer runnability. The western and southern parts of the forest include clearings and recently regrown clearings, while the eastern side is dominated by mature coniferous forest. Open fields within the forest are overgrown with tall grass and include nettles (less present in autumn). The road and path network is of medium density, sparse in steeper areas.

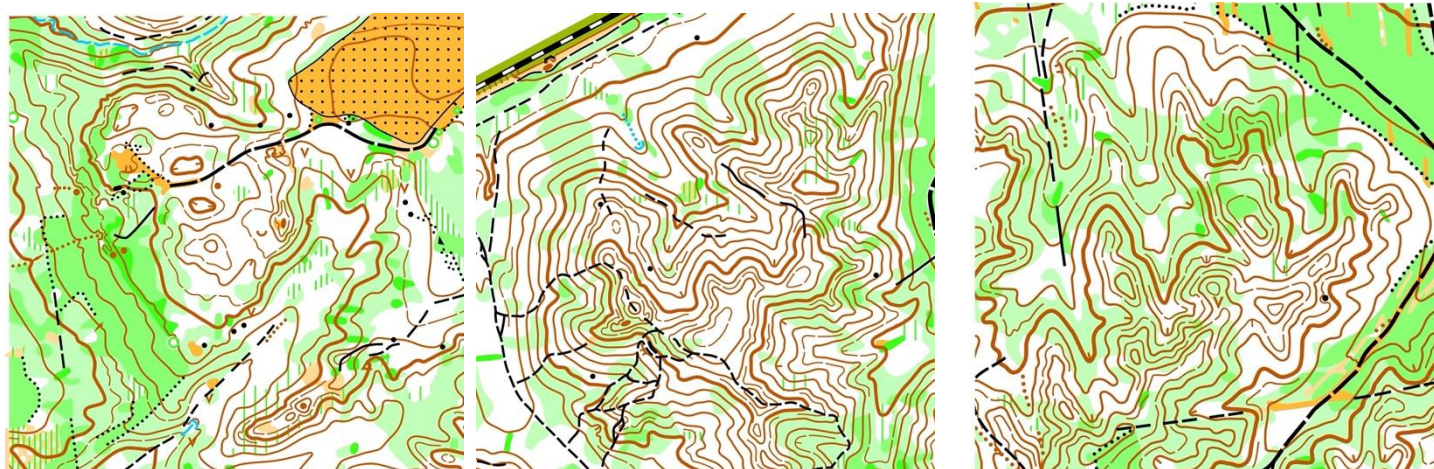
MTBO competition will take place to the south of Santaka forest in an area spanning up to 10 kilometers to the south between the railroad and country road Nemenčinė – Buivydžiai up to Arvydai and Aukštieji Bezdonyš. The forest is largely coniferous, indicating somewhat softer ground. The road and path network is regular (due

to firebreaks) and of medium density. The northern area is moderately hilly, southern portions of the forest are characterised by continental dune areas with small hills.

Maps updated in 2024. Scale 1:10 000, M/V14 ir M/V55+ groups – 1:7500, contour interval 5 m. MTBO map scale 1:10 000, H 2,5 m.

In 2023, Lithuanian orienteering championships in long distance were held here. Link to the map: [Santakos miškas](#)

Examples of the competition map:



Competition type

The individual two-day competition will feature middle-distance and extended middle-distance courses (FootO), middle and long (MTBO), following the rules approved by the Lithuanian Orienteering Federation.

The competition includes the following orienteering disciplines: FootO and MTBO

Categories and participants

Men – Vyrai (V), Women – Moterys (M)

FootO: V/M, V/M 10, 12, 14, 16, 18, 20, 23, 35, 40, 45, 50, 55, 60, 65, 70, 75, 80, 85, Open 1, Open 2, VS, MS

MTBO: DV/DM, DV/D/M 14, 17, 20, 23, 35, 45, 55, 65, Open D

Start procedure

Each competitor starts at their allocated time. Participant can enter the starting zone 3 minutes before start. Start interval is 2 minutes.

Punching system

Punching system will use the electronic SPORTident AIR+ system. Participants can also use standard SPORTident kcards. Those, without SIAC can rent in the competition centre for 1,5 €/day. Participants will be charged the current replacement cost for any lost SIAC cards.

Entries

Registration is open in DB Topas system <https://dbsportas.lt/lt/varz> until 14th October 2024 23:59. **After this deadline, registration is possible only if start times, prepared maps, numbers, and other necessary materials are available.**

Fees

	Until 14.10.2024, 23:59.	After 14.10.2024, 23:59 val.(for vacancies)
M/V 18 and younger	7 € / day	10 € / day
M/V 20, 23	7 € / day	10 € / day
M/V 65 and older	7 € / day	10 € / day
M/V, MV35 - 60	15 € / day	20 € / day
OPEN 1, OPEN 2	10€ adults, 7 € students, seniors (older than 65)	

After registering, but not starting, the starting fee is non-refundable.

Payment

The participant fee is paid during registration by transfer to the following account. Those who pay by bank transfer will be able to pay after the competition according to the invoice issued.

Information when paying:

Orientavimosi sporto klubas „Ažuolas“
IBAN: LT 427044060001311849
AB „SEB bankas“, BIC code CBVILT2X



Results

The winners are determined based on the total sum of their results over the two days.

Participants from the M/V 20, M/V 23, and M/V (Elite) categories compete on the same course and are listed on a single result sheet with the elite classes. Athletes from groups M/V 20 and 23 compete and are awarded in their respective categories and are also eligible for awards in the elite category.

Awards

Prize winners (1 – 3 places) of all groups will be awarded with souvenirs and sponsors' gifts (except OPEN groups). The awards are presented only to the athletes participating in the prize-giving ceremony.

Other information

- Participants are responsible for their own health and safety during the competition, their coaches or accompanying persons are also responsible for children. All participants of the competition must have a medical permission to participate in the competition
- Meals, accommodation and travel expenses of athletes and coaches are paid by the sending organization or the athletes themselves.
- Complaints must be submitted to the competition jury or competition organizers within 1 hour of the participant's finish time, but in any case as early as possible.
- All participants must start with the participant number issued by the organizers. Athletes starting without a participant number will be disqualified.
- By registering, the participants of the competition agree that their name, surname, year of birth, team and results will be published on the competition registration page <https://dbsportas.lt/lt/varz> and during the competition they may be photographed, videotaped, their location determined in real time, and the material can be used to publicize competitions and popularize sports. Participants can contact the LOSF (Lithuanian orienteering sports federation) administration regarding the use of personal data in accordance with the valid LOSF privacy policy.



ORIENTEERING.LT
LIETUVOS ORIENTAVIMOSI SPORTO FEDERACIJA

OK AŽUOLAS

Contacts

Event director Vidmantas Nakvosas, phone No. +37068603297

Contact us via email azuolasok@gmail.com

Sponsors and partners

NACIONALINĖ
SPORTO
AGENTŪRA



ŠVIETIMO,
MOKSLO IR SPORTO
MINISTERIJA

KASP



TRIMTEX
TRIMTEX