

BOC2024



Baltic orienteering championship 2024

Ignalina, 17-19th of May, 2024

Bulletin No. 3



Organizers

Lithuania orienteering federation

Organizing club: OK Oriens

Event Director: Domantas Balčiūnas

Mapper and course planner: Egidijus Kukenys

IOF advisor: Rimas Jovaišas

Jury members: Vilius Aleliūnas (LT), Jānis Krūmiņš (LV), Maret Vaher (EE).

Competition

The participating teams are Lithuania, Latvia and Estonia. Each federation may enter a team of up to 56 competitors – up to 28 women and 28 men – and up to 5 officials of the team. The middle distance competition for the (M21E and W21E) classes is included in the World Ranking Event (WRE) list. Other, non-team runners may participate in the middle distance competition (WRE), therefore such runners would be excluded from the Baltic championships.

Programme

Friday, 17th of May

16:00 - Arrival and accreditation at model event place.

16:30 - 19:00 – Model event.

Saturday, 18th of May

9:30 – Opening ceremony.

10:00 - Middle distance start (WRE) for MW21E.

10:00 - Long distance start for national teams.

12:00 - Long distance start for Baltic Masters Open Championships and Baltic Open Competition.

14:30 - Prize-giving ceremony at the arena.

16:00 - Deadline for submitting relay applications (at event center).

18:00 – Team official's meeting (online)

Sunday, 19th of May

10:00 - Relay start for national teams.

11:00 - Middle distance start for Baltic Masters Open Championships and Baltic Open Competition.

13:30 – Prize giving and closing ceremony at the arena.



Participating classes

Long distance: W14E, W16E, W18E, W20E, M14E, M16E, M18E, M20E.

Middle distance: W21E, M21E.

Relay: W16E, W20E, W21E, M16E, M20E, M21E.

- Each competitor must have full citizenship of the country that he or she represents.
- Each federation may enter a team of up to 56 competitors – up to 28 women and 28 men – and up to 5 officials of the team.
- The maximum number of members in each class is determined as follows:

Class	Competitors	Class	Competitors
W14E	4	M14E	4
W16E	5	M16E	5
W18E	5	M18E	5
W20E	4	M20E	4
W21E	10	M21E	10



Embargoed area

<https://www.google.com/maps/d/edit?mid=135dzzSjmC18AQseD5ek7nsEqO9buicQ&usp=sharing>

Location and courses

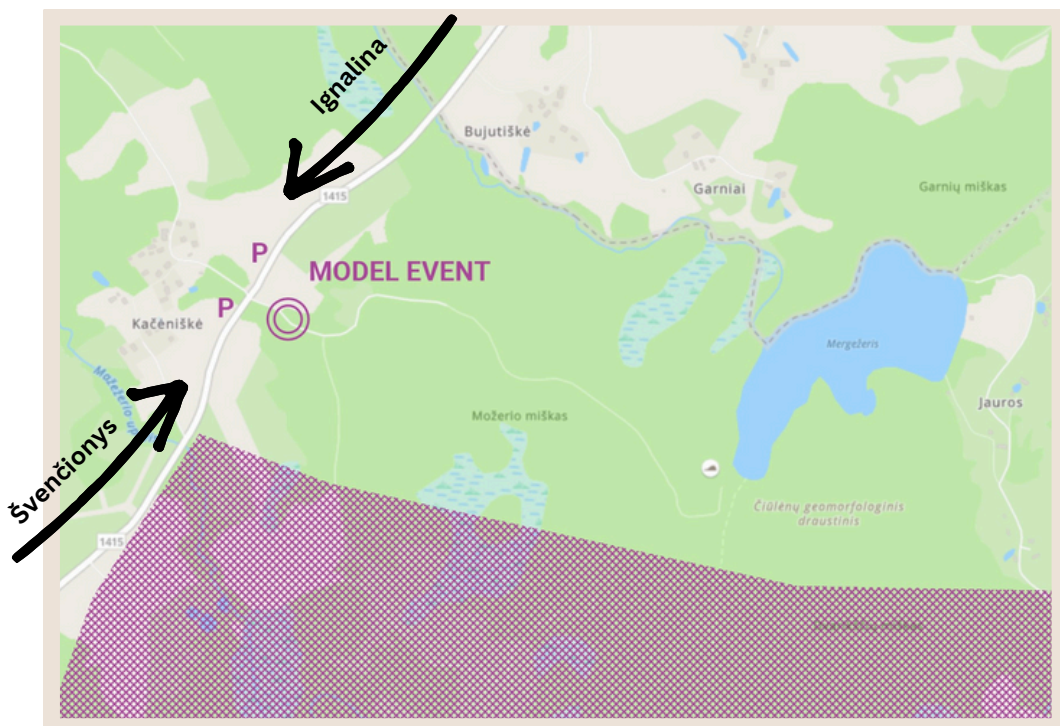
Model event – Čiulėnai

The model event will be held in Sirvėtos regional park – northeast part of Čiulėnai forest.

The model event will be similar to the long/middle competition.

Controls in the forest will be the same as in competition (without SI stations).

Distance from Ignalina to model event – 17 km



[55.2242208, 26.2457576](#)

Map scale for model event:

1:10 000 with contours 2.5 m.

1:15 000 with contours 2.5 m.

Model event will be open 16:30 –19:00

Map maker - Egidijus Kukenys

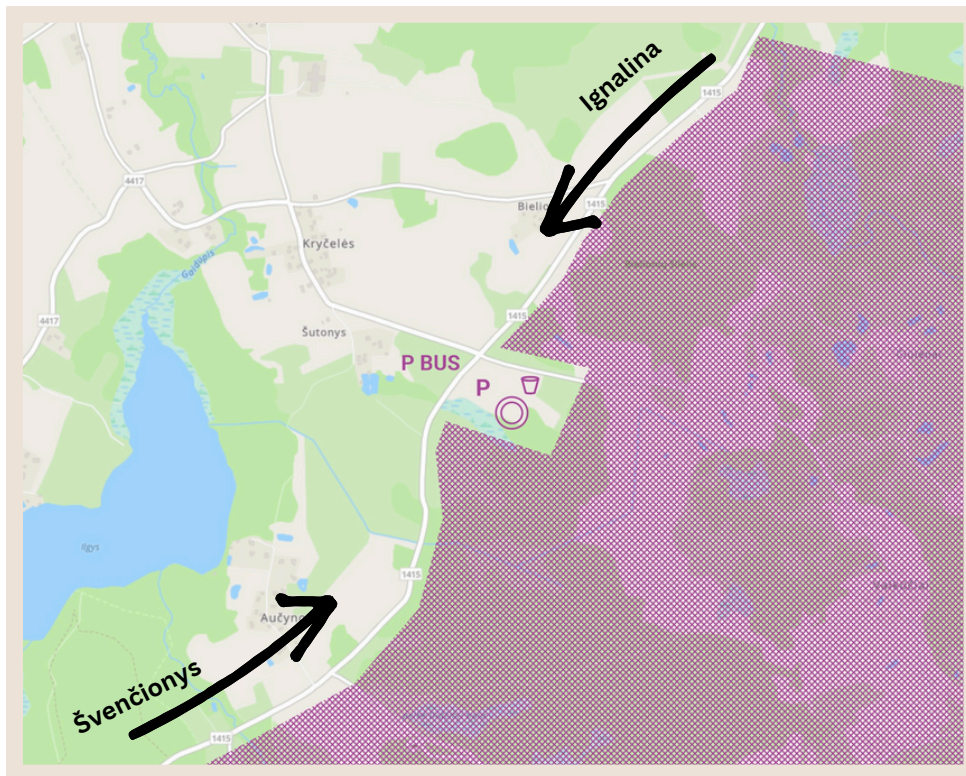
Long distance – Čiulėnai

The long distance event will be held in Sirvėtos regional park.

Previous map: [MAP1](#); [MAP2](#).

For M21E and W21E groups, it is going to be a **middle distance**. For all other groups – long distance.

Distance from Ignalina to long distance event – 19 km.



[55.211556, 26.230916](#)

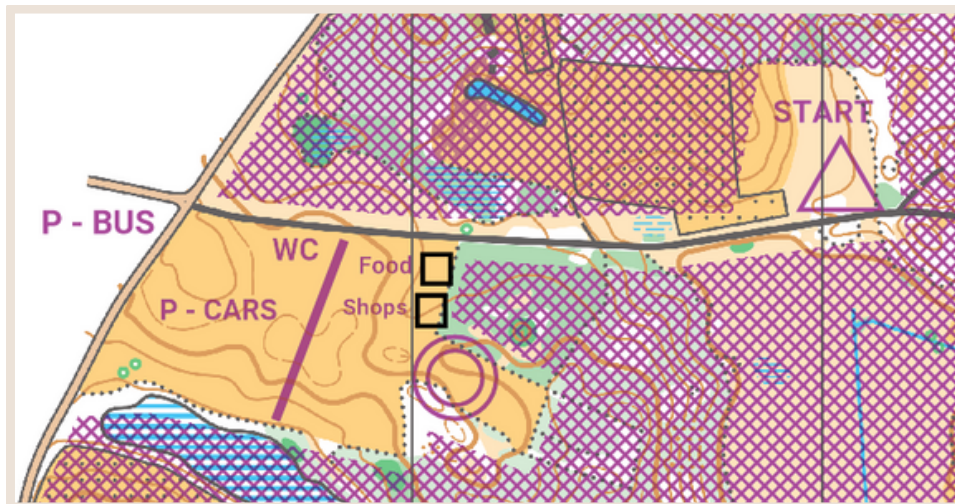
Map scale 1:15 000, contour interval 2.5m. for classes:
MW18E, MW20E.

Map scale 1:10 000, contour interval 2.5m for classes:
MW14E, MW16E, MW21E.

Map maker - Egidijus Kukenys

For MW21E groups there will be a middle distance (WRE).





Čiulėnai competition center

From competition center to start - 400 m.

Warm up on the main road and up to the start area.

Control time - 2.5 hours.

In forest Čiulėnai (long distance) you can expect to see various hill forms scattered around swamps. Swamps are wet and full of water - some are uncrossable and they are marked accordingly. Distance between the lowest and the highest part of the map is 40m. Runnability varies from good to poor. Road and track density - medium.

There will be 1-2 drinks station in the course, depending on the course length.



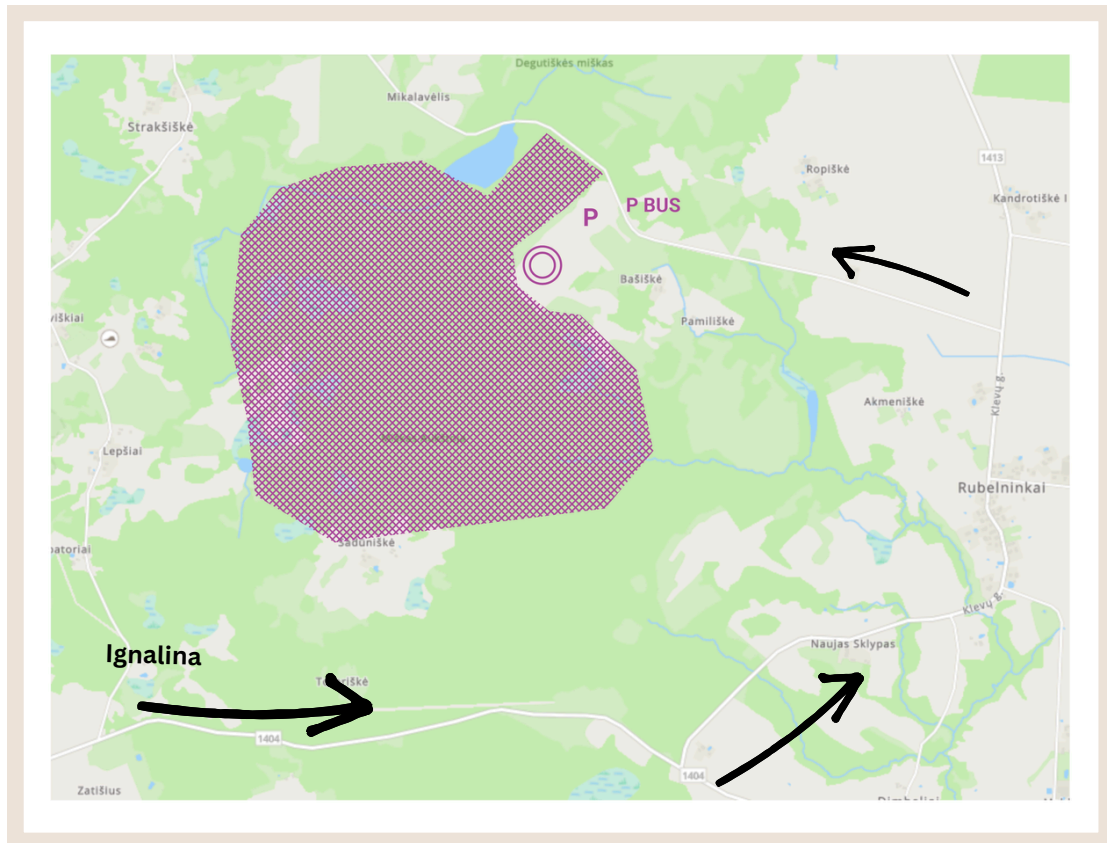
Sample area

Relay – Aukštoja forest

The Relay event will be held in Aukštoja forest, near Rubelninkai village.

Previous map: [MAP1](#).

Distance from Ignalina to relay event – 23 km.



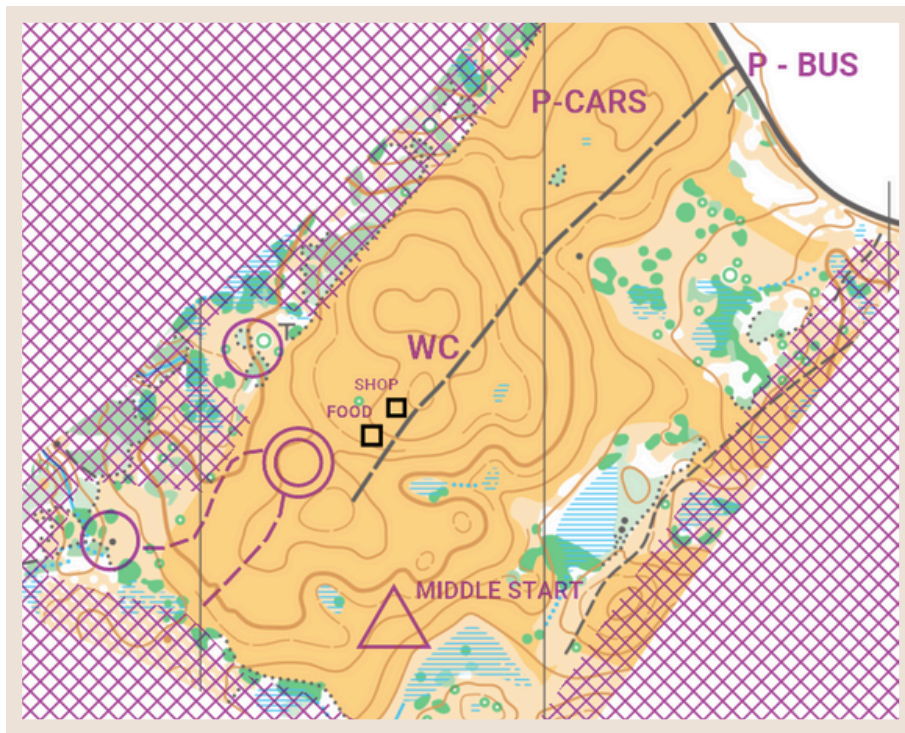
[55.290205, 26.327966](#)

Map scale for classes:

MW16E, MW20E, MW21E - 1:10 000, contour interval 2.5 m.

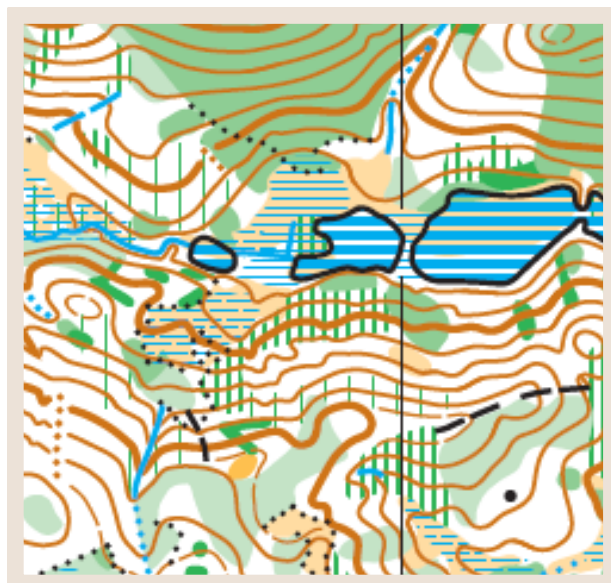
Map maker - Egidijus Kukenys





Aukštoja competition center

In forest Aukštoja (relay) there is a distinct ravine that is dominating in one part of the map with some swamps scattered around the map. Swamps are wet and full of water - some are uncrossable and marked accordingly. Distance between the lowest and the highest part of the map is 55m. Runnability varies from average to poor. Road and track density - very low.



Sample area

Courses

18th of May - Long/Middle

Women

Class	Length (km)	CP	Climb	Expected winner time
W14E	4.2	10	135	35-40
W16E	5.1	14	160	40-45
W18E	7.6	14	240	55-60
W20E	8.8	17	270	60-65
W21E	5.2	19	165	30-35

Men

Class	Length (km)	CP	Climb	Expected winner time
M14E	5.1	12	150	35-40
M16E	7.4	16	230	50-55
M18E	9.6	19	296	60-70
M20E	11.8	24	340	70-80
M21E	6.3	21	220	30-35

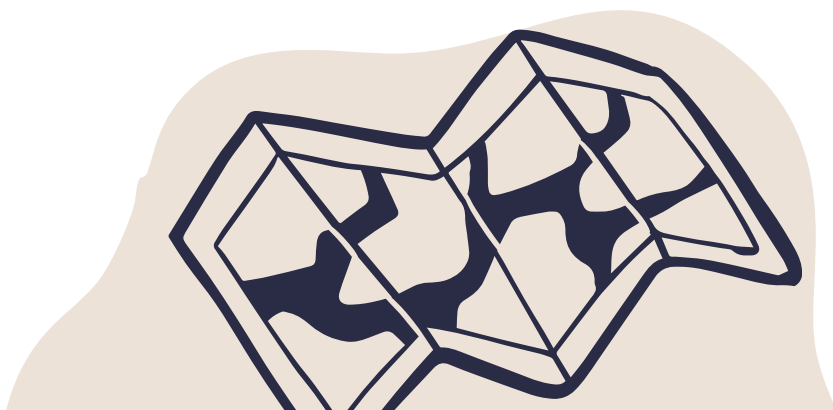
19th of May - Relay

Women

Class	Length (km)	CP	Climb	Expected winner time
W16E	3.4	12	110	25-30
W20E	4.7	16	140	30-35
W21E	5.0	17	150	30-35

Men

Class	Length (km)	CP	Climb	Expected winner time
M16E	4.2	14	130	25-30
M20E	5.6	17	180	30-35
M21E	6.0	19	190	30-35



Entry and start fees

The final deadline for entries is 6th of May 2024. All entries should be confirmed by full payment no later than 13th of May 2024.

The registration shall only be performed by the officials of the federations. Official registration form should be sent to info@boc2024.lt no later than 6th of May 2024.

Entry form can be downloaded [HERE](#).

Those wishing to run in middle distance (WRE) M21E and W21E courses outside the national competition can register through <https://dbsportas.lt/en/varz/2024012>

In the relay, each federation may enter up to 3 teams in every class. In addition, in classes W21E and M21E, each federation may enter one more team of non-team runners for extra fee of 45€ per team.

Participation fee for national teams in accordance with the regulations of Baltic Orienteering Championships is 1300 € per team (1000 € for up to 44 participants per team).

Payment to be made:

Bank “Swedbank”

Beneficiary’s name: Orientavimosi sporto klubas „Oriens“.

Account number: LT42 7300 0100 0238 2105

Swift code: HABALT22



Electronic punching system

Touch-free SPORTident Air+ punching will be used. Participants are asked to use their own SIAC-cards during the event. The organizer will offer rental SIAC-cards. Rented SIAC-Cards must be handed in at the read-out of the Sunday's relay. Missing SIAC Cards will be charged with 80 EUR/card. The technical specification for maximum distance to record a punch is 30 cm

Start order

Long/Middle:

- 3 minutes before the start the participant shall register and check their SportIdent number.
- 2 minutes before the start extra control descriptions are available.
- 1 minute before the start the participant shall arrive at the start line. After the last start signal, the participant shall take the map from their respective map box.

The competitor is responsible for taking his class map.

Prizes

Prizes for Baltic Orienteering Championship – medals for the best 3 for each class in both days.

National team winner will receive a Baltic Orienteering Championship cup.

GPS

M21E, W21E competitors on both days have to use GPS devices handed out by the organizer. If sportsmen refuse to wear GPS devices they will be disqualified from further competition.

GPS device assignment will be available a day before competition. GPS devices will be available 10 minutes before start – in the start place. For relay – 1st and 3rd leg runners will use the same device (2 devices per team)

Complaints and protests

Complaints/protest must be handed over in writing to an event official in the finish area at the information no later than 15 minutes after the official results have been published (announced by the speaker). A complaint may initially be made orally but must subsequently be in writing.

Accommodation options for national teams

Accommodation options for national teams are gathered in excel spreadsheet. You can view it [HERE](#).

Please contact info@boc2024.lt if you need any additional information or assistance regarding accommodation and catering.

Other information

- Food service will be available at both event centers.
- We will have S-Sportas shop, where you can get orienteering equipment
- Toilets will be available only at the event centers. No Toilets on Friday's model training.

Contacts

Event director – Domantas Balčiūnas, +370 603 70797

For all inquiries, please write to info@boc2024.lt

Organizers



Sponsors



Map printing for
orienteering



NACIONALINĒ
SPORTO
AGENTŪRA



ŠVIETIMO,
MOKSLO IR SPORTO
MINISTERIJA

