

# BOC2024



## Baltic Masters Orienteering Championship and Baltic Open Competition

Ignalina, 17-19th of May, 2024

### Bulletin No. 3



## Organizers

Lithuania orienteering federation

Organizing club: OK Oriens

Event Director: Domantas Balčiūnas

Mapper and course planner: Egidijus Kukenys

IOF advisor: Rimas Jovaišas

Jury members: Vilius Aleliūnas (LT), Jānis Krūmiņš (LV), Maret Vaher (EE)

## Programme

*Friday, 17th of May*

16:00 - Arrival and accreditation at model event place for BOC ompetitors.

16:30 - 19:00 – Model event.

*Saturday, 18th of May*

9:30 – Opening ceremony.

10:00 - Middle distance start (WRE) for MW21.

10:00 - Long distance start for national teams.

12:00 - Long distance start for Baltic Masters Championship and Baltic Open Competition.

14:30 - Prize-giving ceremony for national teams at the arena.

*Sunday, 19th of May*

10:00 - Relay start for national teams.

11:00 - Middle distance start for Baltic Masters Championship and Baltic Open Competition.

13:30 – Prize giving and closing ceremony at the arena.



## Groups

Groups for Baltic Masters Orienteering Championship:

M35, M40, M45, M50, M55, M60, M65, M70, M75, M80, M85,  
W35, W40, W45, W50, W55, W60, W65, W70, W75, W80, W85.

Groups for Baltic Open Competition:

M12, M14, M16, M18, M20, M21, M21S,  
W12, W14, W16, W18, W20, W21, W21S,  
OPEN-1, OPEN-2

## Embargoed area

[https://www.google.com/maps/d/edit?  
mid=135dzzSjmCl8AQseD5ek7nsEqO9buicQ&usp=sharing](https://www.google.com/maps/d/edit?mid=135dzzSjmCl8AQseD5ek7nsEqO9buicQ&usp=sharing)



## Locations

### *Model event – Čiulėnai*

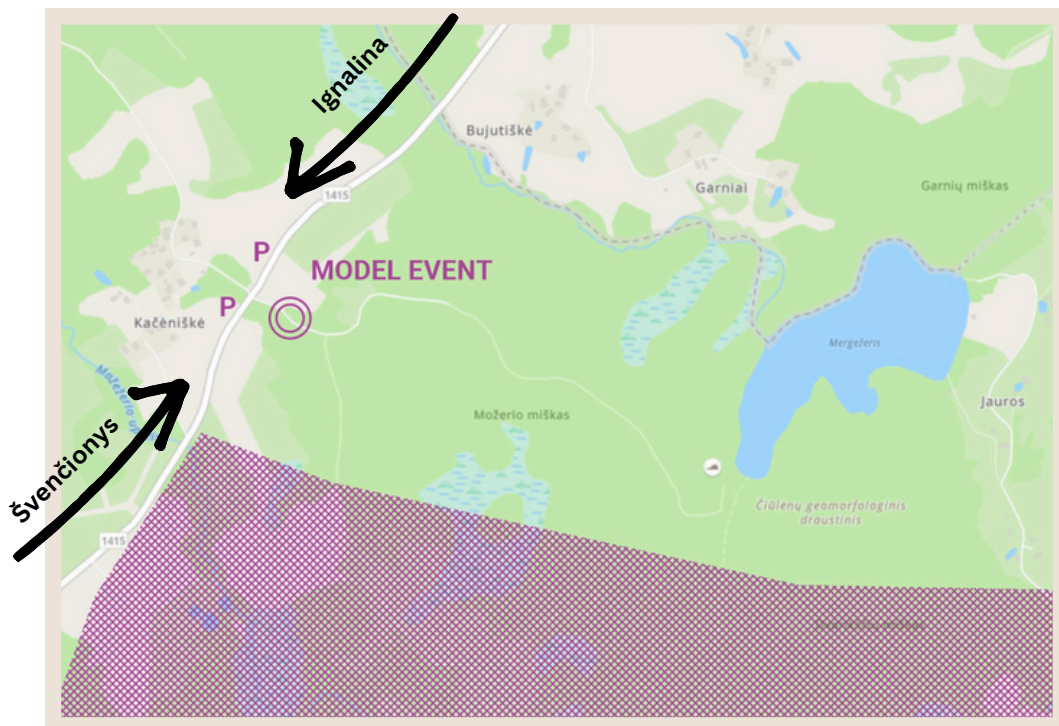
The model event will be held in Sirvėtos regional park – northeast part of Čiulėnai forest.

The model event will be similar to the long distance competition.

Controls in the forest will be the same as in competition (without SI stations).

Distance from Ignalina to model event – 17 km

Registration is required in order to participate in the model event. Please register by emailing to [info@boc2024.lt](mailto:info@boc2024.lt) until 23:00 15th of May, 2024. Price - 3 eur.



[55.2242208, 26.2457576](https://www.openstreetmap.org/?lat=55.2242208&lon=26.2457576)

Map scales for model event:

1:10 000 with contours 2.5 m.

1:15 000 with contours 2.5 m.

Model event will be open 17:00 –19:00

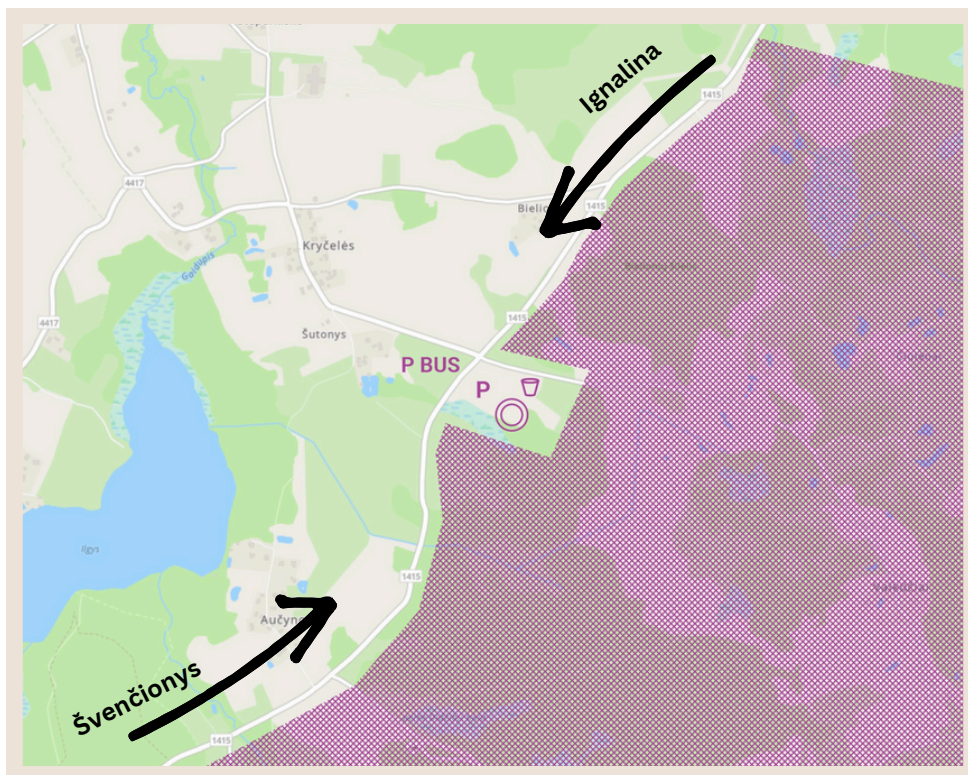
Map maker - Egidijus Kukenys

## *Long distance – Čiulėnai*

The long distance event will be held in Sirvėtos regional park.

Previous map: [MAP1](#); [MAP2](#).

Distance from Ignalina to long distance event – 19 km.



[55.211556, 26.230916](#)

Map scale 1:15 000 for classes MW 18-40, contour interval 2.5m.

Map scale 1:10 000 for classes MW 12-16, MW21, MW 45-55,  
contour interval 2.5m

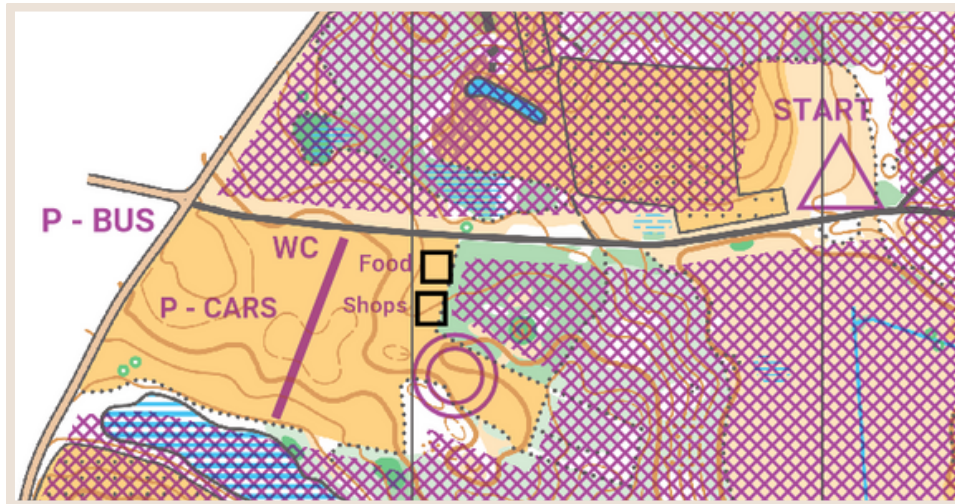
Map scale 1:7 500 for classes MW 60-85, contour interval 2.5 m.

**For M21 and W21 groups there will be a middle distance (WRE). On Saturday they will run in M21E and W21E groups. Start time is from 10:00.**

Map created in 2022 - 2023. Inspected in 2024.

Map maker - Egidijus Kukenys





Čiulėnai competition center

From competition center to start - 400 m.

Warm up on the main road and up to the start area.

There will be no competitors bib numbers.

Control time - 2.5 hours.

In forest Čiulėnai (long distance) you can expect to see various hill forms scattered around swamps. Swamps are wet and full of water - some are uncrossable and they are marked accordingly. Distance between the lowest and the highest part of the map is 40m. Runnability varies from good to poor. Road and track density - medium.

There will be 1-2 drinks station in the course, depending on the course length.



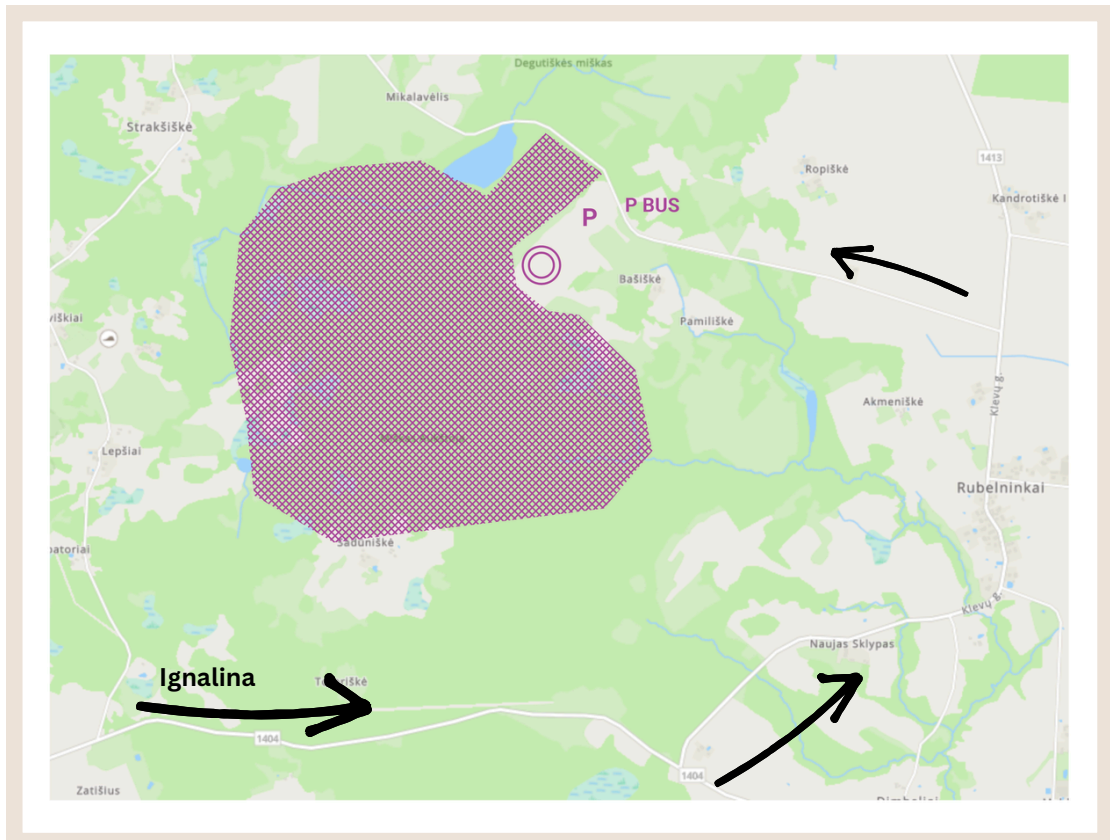
Sample area

## *Middle distance – Aukštoja forest*

The Middle distance event will be held in Aukštoja forest, near Lepšiai village.

Previous map: [MAP1](#).

Distance from Ignalina to event center – 23 km.



[55.290205, 26.327966](#)

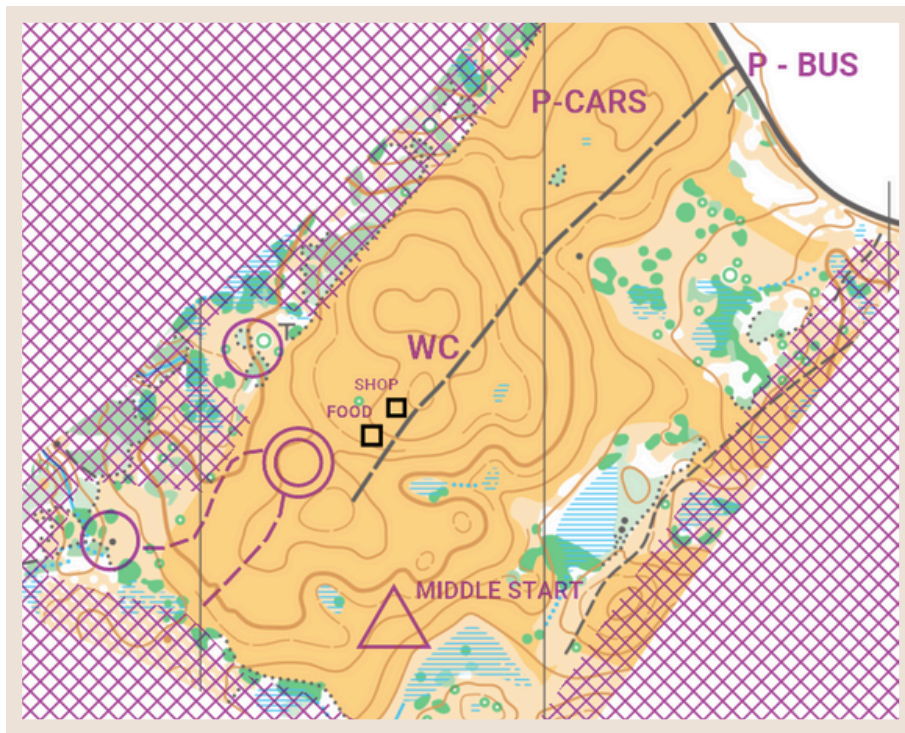
Map scale 1:10 000 for classes: M/W 14-55, contour interval 2.5m

Map scale 1:7 500 for classes: M/W 12, M/W 60-85, contour interval 2.5 m.

Map created in 2022 - 2023. Inspected in 2024.

Map maker - Egidijus Kukenys





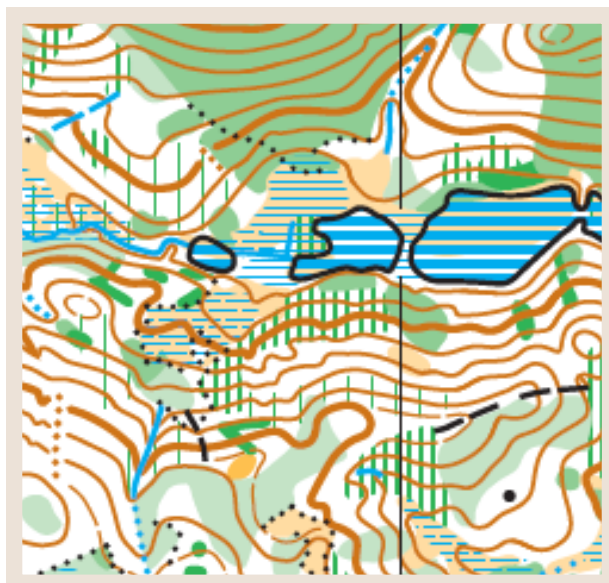
Aukštoja competition center

Middle distance start area in in the competition center.

Warmup - in the competition center field or on the main road.

Control time - 2 hours.

In forest Aukštoja (relay) there is a distinct ravine that is dominating in one part of the map with some swamps scattered around the map. Swamps are wet and full of water - some are uncrossable and marked accordingly. Distance between the lowest and the highest part of the map is 55m. Runnability varies from average to poor. Road and track density - very low.



Sample area



# Courses

## *18th of May - Long*

### *Women*

### *Men*

Class	Length (km)	CP	Climb	Time (min)	Class	Length (km)	CP	Climb	Time (min)
W12	2.8	8	80	25-30	M12	2.8	8	80	30-35
W14	4.2	10	125	35-40	M14	5.2	12	155	35-40
W16	5.2	12	155	40-45	M16	7.2	16	215	50-55
W18	7.1	14	215	55-60	M18	9.3	17	280	60-70
W20	8.4	16	250	60-65	M20	10.9	21	330	70-80
W21	5.3	19	165	30-35	M21	6.5	21	220	30-35
W21S	7.2	15	215	55-60	M21S	9.3	20	280	60-70
W35	6.9	15	210	55	M35	10.7	21	320	70
W40	6.4	14	190	50	M40	9.6	19	290	65
W45	5.0	12	150	45	M45	8.6	17	260	60
W50	5.0	12	150	45	M50	7.9	16	240	55
W55	4.4	11	130	45	M55	6.2	15	185	50
W60	3.9	10	120	45	M60	5.8	14	175	50
W65	3.9	10	120	45	M65	5.2	12	155	50
W70	3.2	8	95	45	M70	4.4	11	130	50
W75	3.2	8	95	45	M75	3.9	10	120	50
W80	2.4	7	70	45	M80	3.2	8	95	50
W85	2.2	6	65	45	M85	2.4	7	70	45
OPEN 2	3.5	9	105	-	OPEN 1	5.2	12	155	-

## *19th of May - Middle*

### *Women*

### *Men*

Class	Length (km)	CP	Climb	Time (min)	Class	Length (km)	CP	Climb	Time (min)
W12	2.4	8	70	20-25	M12	2.4	8	70	20-25
W14	3.1	9	95	20-25	M14	3.5	10	105	20-25
W16	3.5	10	105	25-30	M16	4.2	12	125	25-30
W18	3.8	12	115	25-30	M18	4.4	14	130	25-30
W20	4.7	15	140	30-35	M20	5.3	17	160	30-35
W21	5.0	16	150	30-35	M21	5.9	19	180	30-35
W21S	4.4	14	130	30-35	M21S	5.0	16	150	30-35
W35	4.3	14	130	30-35	M35	5.1	17	155	30-35
W40	4.1	12	120	30-35	M40	4.8	15	145	30-35
W45	3.5	10	105	25-30	M45	4.5	14	135	25-30
W50	3.4	10	100	25-30	M50	4.3	14	130	25-30
W55	3.1	9	95	25-30	M55	4.0	12	120	25-30
W60	2.5	8	75	25-30	M60	3.8	12	115	25-30
W65	2.5	8	75	25-30	M65	3.5	10	105	25-30
W70	2.1	7	65	25-30	M70	3.1	9	95	25-30
W75	2.1	7	65	25-30	M75	2.5	8	75	25-30
W80	1.4	6	40	25-30	M80	2.1	7	65	25-30
W85	1.3	5	40	25-30	M85	1.4	6	40	25-30
OPEN 2	3.2	9	95	-	OPEN 1	4.2	12	125	-

## Registration and start fees

Registration link: <https://dbsportas.lt/lt/varz/2024012>

### Registration deadline - 23:59:59 13th of May, 2024

MW 12-20 – 15€, 1 start 7€.

MW 21-60 – 31€, 1 start 18€.

MW 65-85 – 25€, 1 start 15€.

(SI AIR rent 1€/day).

OPEN – 1 start 15€.

- 1 € national park ticket is added to all competitors start fee.
- Parking fee of 1 € will be collected from each car for each day,
- OPEN group can start anytime during the competition. No prizegiving for OPEN groups.
- If a competitor loses SI card or does not return to the organizers, there will be a fine of SI cards value.
- Competitors who registered, but are not available to participate, will pay a fine of 1/2 start fee.
- Late entries to vacant places only, entry fee for the vacant place entries - 1.5 x start fee.

Payment can be made by cash during the competition or by bank transfer.

Bank “Swedbank”

Beneficiary’s name: Orientavimosi sporto klubas „Oriens“.

Account number: LT42 7300 0100 0238 2105

Swift code: HABALT22



## **Electronic punching system**

Touch-free SPORTident Air+ punching will be used. Participants are asked to use their own SIAC-cards during the event. The organizer will offer rental SIAC-cards.. Missing SIAC Cards will be charged with 80 EUR/card. The technical specification for maximum distance to record a punch is 30 cm

## **Start order**

Long/Middle:

- 3 minutes before the start the participant shall register and check their SportIdent number.
- 2 minutes before the start extra control descriptions are available.
- 1 minute before the start the participant shall arrive at the start line. After the last start signal, the participant shall take the map from their respective map box.

The competitor is responsible for taking his class map.

## **Prize giving**

Baltic Masters Orienteering Competition:

3 best after 2 days (long + middle) in each class are awarded with a medals.

Baltic Open Competition:

3 best after 2 days (long + middle) in each class are awarded with prizes.



## Other information

- Food service will be available at both event centers.
- We will have S-Sportas shop, where you can get orienteering equipment
- Toilets will be available only at the event centers. No toilets at the Friday's official training.

## Rules

Competition are organized according to:

[Lithuanian foot orienteering rules](#)

[IOF foot orienteering \(WRE\) rules](#)

## Accommodation

Paliesius manor has special offer for orienteers, More information [HERE](#).

Prices for accommodation are pretty standard and are starting from 20 eur. per person per night:

[Booking.com](#)

[Airbnb.com](#)

## Contacts

Event Director – Domantas Balčiūnas, +370 603 70797

For all inquiries: [info@boc2024.lt](mailto:info@boc2024.lt)

## Organizers



# Sponsors



NACIONALINĒ  
SPORTO  
AGENTŪRA

